

AT




CELLE DI CARICO OFF-CENTER per piattaforme 1200 x 1200 mm SINGLE-POINT LOAD CELLS for platforms 1200 x 1200 mm

AT kg 2000

OPZIONI A RICHIESTA :

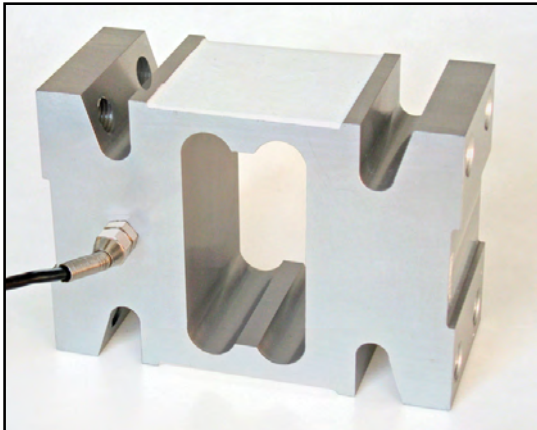
- Approvazione ATEX  II 1 G  II 2 D (zona 0-1-2-21-22)...
- Versione  R60 C3 (modello ATL)

OPTIONS ON REQUEST :

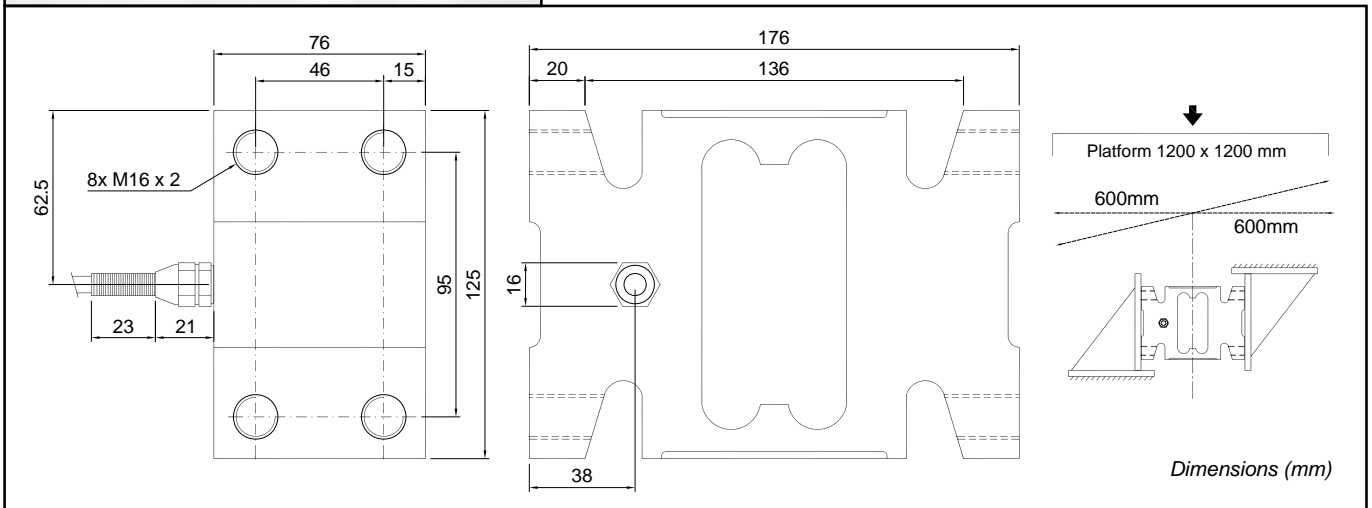
- ATEX approved  II 1 G  II 2 D (zone 0-1-2-21-22)...
-  R60 C3 sversion (mod. ATL)

Realizzate in accordo alle norme OIML R60

Manufactured according to OIML R60 standards



- ESECUZIONE IN LEGA DI ALLUMINIO
- ERRORE COMBINATO $\leq \pm 0,03\%$
- GRADO DI PROTEZIONE IP 65
- ALLOY ALUMINUM LOAD CELL
- COMBINED ERROR $\leq \pm 0.03\%$
- PROTECTION CLASS IP 65



CARATTERISTICHE TECNICHE

SENSIBILITA' 2 mV/V +/-10%
 EFFETTO DELLA TEMPERATURA SULLO ZERO 0.0025% °C
 EFFETTO DELLA TEMPERATURA SUL FONDO SCALA 0.0025% °C
 COMPENSAZIONE TERMICA - 10°C / + 40°C
 CAMPO DI TEMPERATURA DI LAVORO - 20°C / + 60°C
 CREEP A CARICO NOMINALE DOPO 30 MINUTI 0.03 %
 TENSIONE DI ALIMENTAZIONE MAX TOLLERATA 15 Volt
 RESISTENZA D'INGRESSO 410 ohm +/- 10
 RESISTENZA DI USCITA 350 ohm +/- 3
 BILANCIAMENTO DI ZERO +/- 2 %
 RESISTENZA D'ISOLAMENTO >2000 Mohm
 CARICO STATICO MASSIMO (% sul Fondo Scala) 120 %
 CARICO DI ROTTURA (% sul Fondo Scala) > 200 %
 DEFLESSIONE A CARICO NOMINALE 0.8 mm

TECHNICAL FEATURES

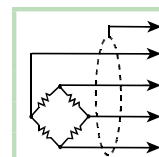
RATED OUTPUT
 TEMPERATURE EFFECT ON ZERO
 TEMPERATURE EFFECT ON SPAN
 COMPENSATED TEMPERATURE RANGE
 OPERATING TEMPERATURE RANGE
 CREEP AT NOMINAL LOAD IN 30 MINUTES
 MAX SUPPLY VOLTAGE WITHOUT DAMAGE
 INPUT RESISTANCE
 OUTPUT RESISTANCE
 ZERO BALANCE
 INSULATION RESISTANCE
 SAFE OVERLOAD (% of Full Scale)
 ULTIMATE OVERLOAD (% of Full Scale)
 DEFLECTION AT NOMINAL LOAD

CAVO

LUNGHEZZA 3 m
 DIAMETRO 5 mm
 FILI CONDUTTORI 4 x 0.20 mm²

CABLE

LENGTH 3 m
 DIAMETER 5 mm
 CORES 4



SCHERMO	SHIELD
+ SEGNALE (VERDE)	+ SIGNAL (GREEN)
+ ALIMENTAZIONE (ROSSO)	+ EXCITATION (RED)
- SEGNALE (BIANCO)	- SIGNAL (WHITE)
- ALIMENTAZIONE (NERO)	- EXCITATION (BLACK)