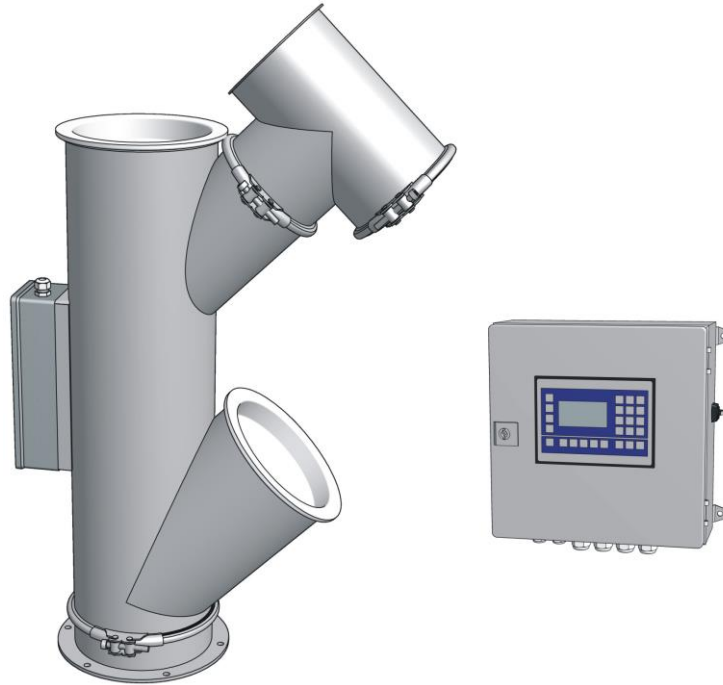


VERTICAL PIPE WEIGHER DCG

Continuous weighing of free flowing bulk solids



Overview

- Inexpensive, accurate weighing system
- Easy installation with standard pipe connectors
- Reliable system with low maintenance
- Designed for weighing of grain, malt, pellets and granules

Application

The *Vertical Pipe Weigher DCG* is suited for the following applications:

- Continuous weighing of bulk flow for in-plant control purpose
- Pre-weighing of bulk for truck loading processes
- Entry of quantities for silo management

The *Vertical Pipe Weigher* continuously weighs free bulk flow.

Function

The bulk is slowed down by means of a falling brake. Then it is reaccelerated and fed into a pipe bend. The pipe bend is connected with a load cell. The measured force is proportional to the throughput.

Applied products

All free flowing products can be measured, e.g. grain, pulses, granules, malt, pellets, soya and diverse bruised grains.



Construction

The *Vertical Pipe Weigher DCG* consists of steel housing, falling brake, baffle pipe, load cell and electrical measuring system. The housing is dust-tight.

Sizes

The following sizes are available:

| Type | Pipe Ø at inlet | Max. capacity approx. | Installation height |
|---------|-----------------|-----------------------|---------------------|
| DCG.120 | 120 mm | 20 m ³ /h | 803 mm |
| DCG.150 | 150 mm | 35 m ³ /h | 934 mm |
| DCG.200 | 200 mm | 75 m ³ /h | 1270 mm |
| DCG.250 | 250 mm | 130 m ³ /h | 1480 mm |
| DCG.300 | 300 mm | 180 m ³ /h | 1686 mm |

The housing is made of standard steel, powder-coated in color RAL7032, inlet pipe is round.

Integration

The weigher must be installed in vertical position. The inlet is supplied with flared tube end, the outlet is connected by a floor flange. In case of vibrations the in- or outlet must be disconnected by rubber sleeves. Air flowing through the weigher due to pressure differences must be prevented. For pressure compensation there is an additional pipe connection at the outlet of the housing.

Accuracy

The measuring tolerance lies at +/- 0,5 – 2 %*, depending on feed design, product homogeneity and throughput.

Evaluation electronic

Extern electronic type FE128

Available for panel mounting (24 V DC) or inside wall housing (230 V AC), can be installed independent from the dosing unit, connection of max. 2 weighing units, with LCD-display and keypad, display of capacity and total weight, preselection function, output if kg-pulses and analogue output of capacity (0-10 V), graphic registration over 48h, 10 product-specific calibrations possible, RS232/485-interface

Supplier information

| | |
|---------------------|---|
| Company name | FRIEDRICH electronic GmbH & Co. KG |
| Address | Holz­mühlerweg 100, D - 35457 Lollar, Germany |
| Tel | +49 (0) 6406 – 1509 |
| Fax | +49 (0) 6406 – 6602 |
| E-Mail | service@friedrich-electronic.de |
| Internet | www.friedrich-electronic.de |

Due to our policy of continuous development, given specifications and data are subject to change.

(*in relation to full-scale reading)