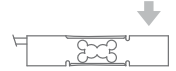
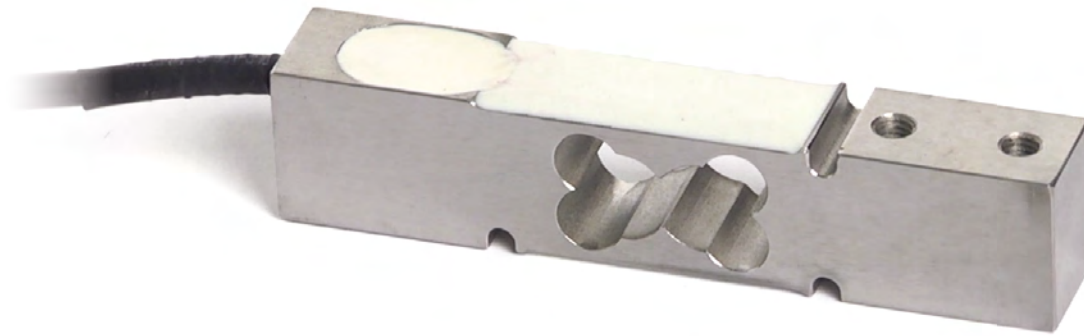




Manufactured according to OIML R60 standards



Capacity from 6 kg to 50 kg



- AISI 420 STAINLESS STEEL
- COMBINED ERROR $\leq \pm 0.02\%$
- PROTECTION CLASS IP67

CAPACITY	kg	IECEx Ex EAC	PLATFORM DIMENSION (mm)	NET WEIGHT OF LOAD CELL (kg)	CODE
6		• •	350 x 350	0.4	PRC6
15		• •	350 x 350	0.4	PRC15
30		• •	350 x 350	0.4	PRC30
50		• •	350 x 350	0.4	PRC50
		ON REQUEST			

CERTIFICATIONS

CERTIFICATIONS ON REQUEST

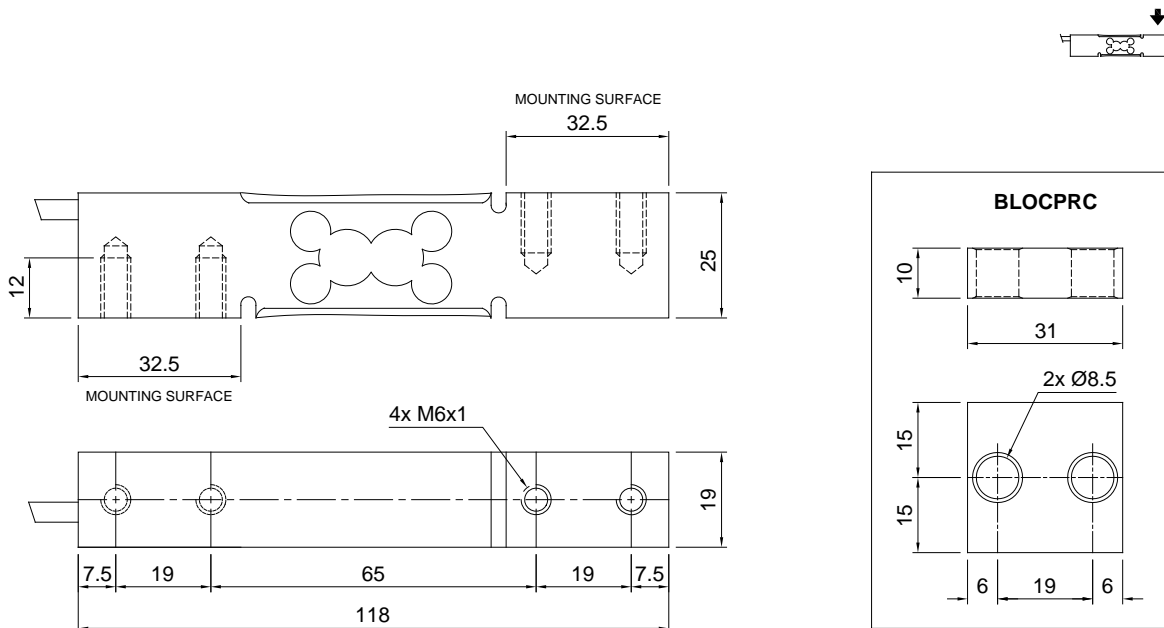
Ex	ATEX II 1GD (zone 0-1-2-20-21-22)
IECEx Ex	IECEX II 1GD (zone 0-1-2-20-21-22)
EAC	Complies with the Eurasian Custom Union regulations (Russia, Belarus, Kazakhstan)

COMPLEMENTARY ACCESSORIES



DESCRIPTION	CODE
Stainless steel drawn block.	BLOCPRC

DIMENSIONS (mm)



TECHNICAL FEATURES

Material	AISI 420 stainless steel		
Nominal load (E max)	6 - 15 - 30 - 50 kg		
Combined error	≤ ±0.02%		
Protection class	IP67		
Rated output	2 mV/V ±10%	Input resistance	380 Ω ±10
Temperature effect on zero	0.002% °C	Output resistance	350 Ω ±5
Temperature effect on span	0.002% °C	Zero balance	±1%
Compensated temperature range	-10 °C / +40 °C	Insulation resistance	>5000 MΩ
Operating temperature range	-20 °C / +60 °C	Safe overload (% of full scale)	150%
Creep at nominal load in 30 minutes	0.02%	Ultimate overload (% of full scale)	300%
Max supply voltage without damage	15 V	Deflection at nominal load	0.3 mm

ELECTRICAL CONNECTIONS

Cable length	3 m
Cable diameter	5 mm
Cores	4/6 x 0.20 mm ²

