



Manufactured according to OIML R60 standards

Capacity from 5000 kg to 20000 kg

- 17-4 PH STAINLESS STEEL
- HOLES FOR STANDARD SHACKLES
- COMBINED ERROR $\leq \pm 0.03\%$
- PROTECTION CLASS IP68



CAPACITY	kg	IECEx	Ex	EAC	NET WEIGHT OF LOAD CELL (kg)	CODE
5000		•	•	•	4.5	TAL5000
10000		•	•	•	4.6	TAL10000
20000		•	•	•	6.6	TAL20000

ON REQUEST

CERTIFICATIONS

CERTIFICATIONS ON REQUEST

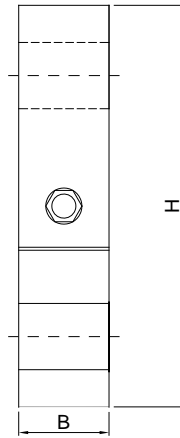
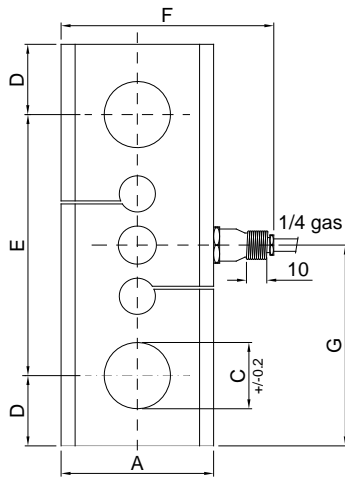
- ✓ Calibration report (ACCREDIA LAT traceability)
- Ex ATEX II 1GD (zone 0-1-2-20-21-22)
- IECEx Ex IECEx II 1GD (zone 0-1-2-20-21-22)
- EAC Complies with the Eurasian Custom Union regulations (Russia, Belarus, Kazakhstan)

OPTIONS ON REQUEST

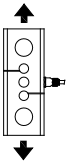
DESCRIPTION

Two redundant strain gauges Wheatstone bridges (350 Ω) with two output cables; for dual safety systems

DIMENSIONS (mm)



	kg 5000	kg 10000	kg 20000
A	76	82	
B	45	54	
C	33	52	
D	35	47	
E	130	166	
F	106	112	
G	100	130	
H	200	260	



TECHNICAL FEATURES

Material	17-4PH stainless steel		
Nominal load (E max)	5000 - 10000 - 20000 kg		
Combined error	≤ ±0.03%		
Protection class	IP68		
Rated output	2 mV/V ±0.1%	Input resistance	350 Ω ±5
Temperature effect on zero	0.005% °C	Output resistance	350 Ω ±5
Temperature effect on span	0.003% °C	Zero balance	±1%
Compensated temperature range	-10 °C / +50 °C	Insulation resistance	>5000 MΩ
Operating temperature range	-20 °C / +70 °C	Safe overload (% of full scale)	150%
Creep at nominal load in 30 minutes	0.03%	Ultimate overload (% of full scale)	300%
Max supply voltage without damage	15 V	Deflection at nominal load	0.3 mm

ELECTRICAL CONNECTIONS

Cable length	10 m
Cable diameter	5 mm
Cores	4/6 x 0.25 mm ²

