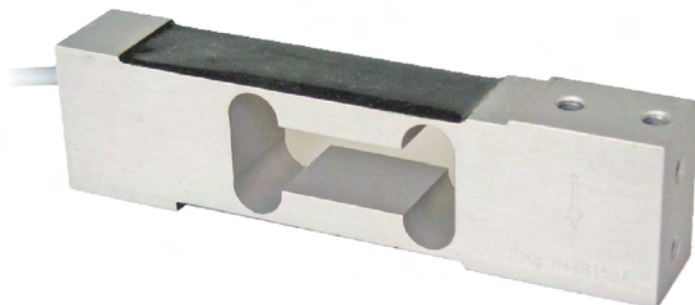
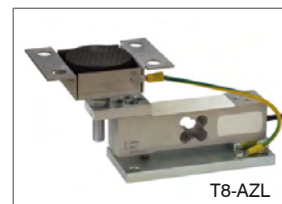




Capacity from 10 kg to 100 kg



MOUNTING KITS



- ALLOY ALUMINUM
- COMBINED ERROR $\leq \pm 0.02\%$ (0.017% C4)
- PROTECTION CLASS IP65

CAPACITY	kg	ACCURACY CLASS		OIML	IECEx	Ex	EAC	PLATFORM DIMENSION (mm)	NET WEIGHT OF LOAD CELL (kg)	CODE
		C3	C4							
10		C3	-		•	•		400 x 400	0.4	AZL10
15		C3	C4		•	•		400 x 400	0.4	AZL15
20		C3	C4		•	•		400 x 400	0.4	AZL20
30		C3	C4		•	•		400 x 400	0.4	AZL30
50		C3	C4		•	•		400 x 400	0.4	AZL50
100		C3	-		•	•		400 x 400	0.4	AZL100

ON REQUEST

CERTIFICATIONS

OIML R60 C3

CERTIFICATIONS ON REQUEST

ATEX II 1GD (zone 0-1-2-20-21-22)

IECEx II 1GD (zone 0-1-2-20-21-22)

OIML R60 C4 (see capacities table)

Complies with the Eurasian Custom Union regulations (Russia, Belarus, Kazakhstan)

COMPLEMENTARY ACCESSORIES



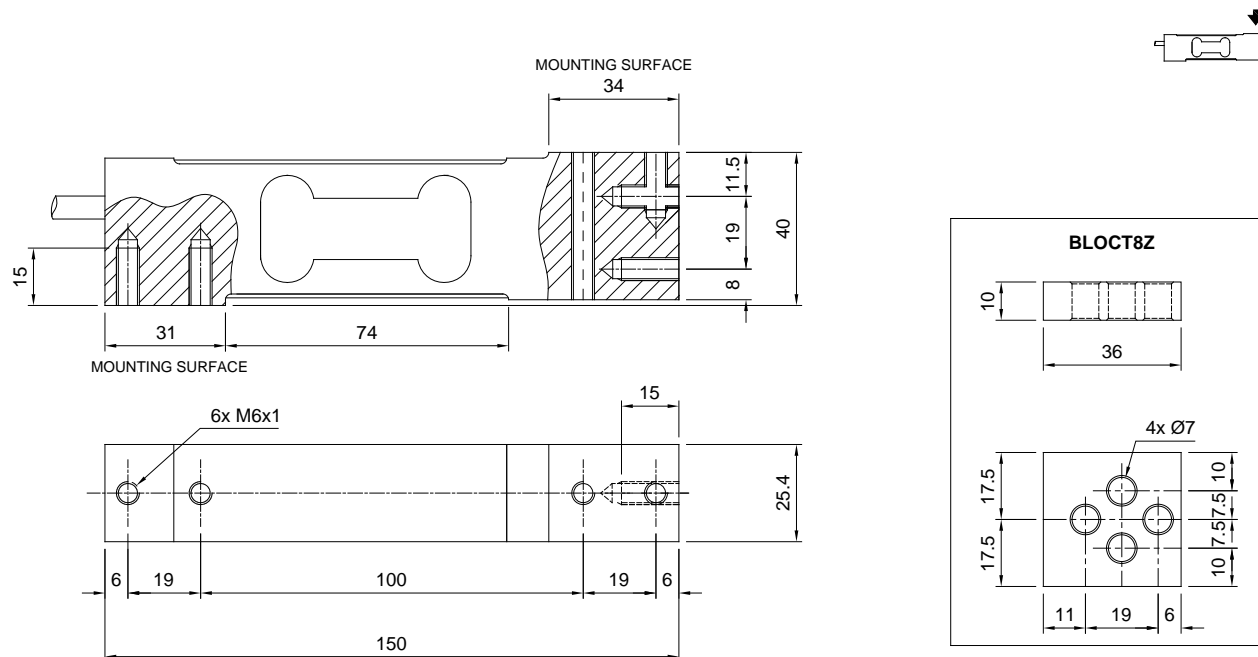
DESCRIPTION

Galvanized steel drawn block.

CODE

BLOCT8Z

DIMENSIONS (mm)



TECHNICAL FEATURES

Material	Alloy aluminum		
OIML R60 Accuracy class • Verification intervals	C3 • 3000	C4 • 4000	
Nominal load (E max)	10 - 15 - 20 - 30 - 50 - 100 kg	15 - 20 - 30 - 50 kg	
Minimum verification interval (V min)	E max / 12000	E max / 20000	
Combined error	≤ ±0.02%	≤ ±0.017%	
Protection class	IP65		
Rated output	2 mV/V ±10%	Input resistance	409 Ω ±6
Temperature effect on zero	0.0017% °C	Output resistance	350 Ω ±3
Temperature effect on span	0.0014% °C	Zero balance	< ±1%
Compensated temperature range	-10 °C / +40 °C	Insulation resistance	≥5000 MΩ
Operating temperature range	-35 °C / +65 °C	Safe overload (% of full scale)	150%
Creep at nominal load in 30 minutes	0.02%	Ultimate overload (% of full scale)	300%
Max supply voltage without damage	18 V	Deflection at nominal load	0.5 mm

ELECTRICAL CONNECTIONS

Cable length	6 m
Cable diameter	5 mm
Cores	6 x 0.20 mm ²

