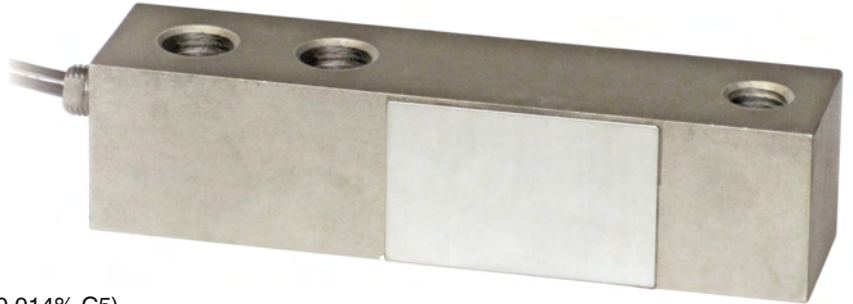




Capacity from 500 kg to 5000 kg



- SPECIAL STEEL
- COMBINED ERROR  $\leq \pm 0.02\%$  (0.017% C4; 0.014% C5)
- PROTECTION CLASS IP67

### MOUNTING KITS



| CAPACITY | kg | ACCURACY CLASS |    |    | IECEx | Ex | EAC | NTEP | NET WEIGHT OF LOAD CELL (kg) | CODE |
|----------|----|----------------|----|----|-------|----|-----|------|------------------------------|------|
|          |    | C3             | C4 | C5 |       |    |     |      |                              |      |
| 500      |    | •              | •  | •  | •     | •  | •   | 0.8  | FTKL500                      |      |
| 1000     |    | •              | •  | •  | •     | •  | •   | 0.8  | FTKL1000                     |      |
| 1500     |    | •              | •  | •  | •     | •  | •   | 0.9  | FTKL1500                     |      |
| 2000     |    | •              | •  | •  | •     | •  | •   | 0.9  | FTKL2000                     |      |
| 3000     |    | •              | •  | •  | •     | •  | •   | 1.7  | FTKL3000                     |      |
| 5000     |    | •              | •  | •  | •     | •  | •   | 1.7  | FTKL5000                     |      |

ON REQUEST

### CERTIFICATIONS



OIML R60 C3

CERTIFICATIONS ON REQUEST



ATEX II 1GD (zone 0-1-2-20-21-22)



IECEX II 1GD (zone 0-1-2-20-21-22)



OIML R60 C4/C5

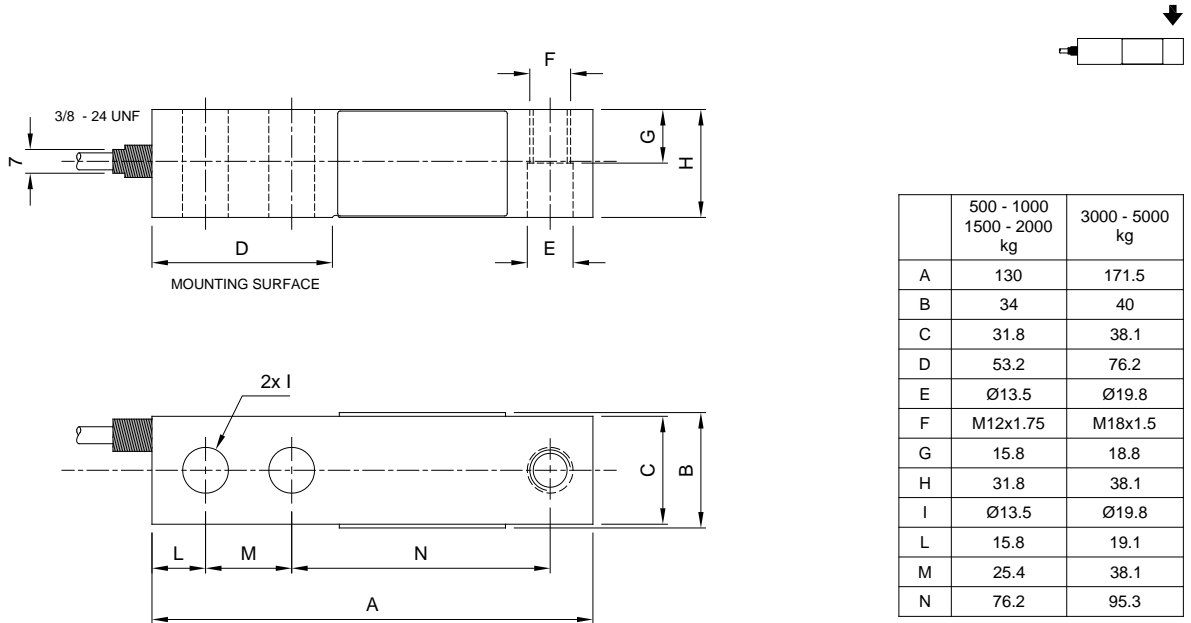


Complies with the Eurasian Custom Union regulations (Russia, Belarus, Kazakhstan)



NTEP - compliant to the metrological standards of United States and Canada (capacity from 50 to 500 kg)

### DIMENSIONS (mm)

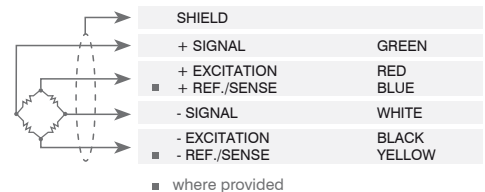


### TECHNICAL FEATURES

| Material                              | AISI 420 stainless steel                         |                                     |                                 |                |
|---------------------------------------|--|-------------------------------------|---------------------------------|----------------|
|                                       | OIML R60 Accuracy class • Verification intervals |                                     | C5 • 5000                       |                |
| Nominal load (E max)                  | 500 - 1000 - 1500 kg<br>2000 - 3000 - 5000 kg    |                                     | 500 - 1000 kg<br>1500 - 2000 kg | 3000 - 5000 kg |
| Minimum verification interval (V min) | E max / 10000                                    | E max / 15000                       | E max / 20000                   | E max / 18000  |
| Combined error                        | ≤ ±0.02%   | ≤ ±0.017%                           | ≤ ±0.014%                       |                |
| Protection class                      | IP67   |                                     |                                 |                |
| Rated output                          | 3 mV/V ±0.1%                                     | Input resistance                    | 350 Ω ±3.5                      |                |
| Temperature effect on zero            | 0.0018% °C                                       | Output resistance                   | 350 Ω ±3.5                      |                |
| Temperature effect on span            | 0.0014% °C                                       | Zero balance                        | ≤ ±1%                           |                |
| Compensated temperature range         | -10 °C / +40 °C                                  | Insulation resistance               | ≥5000 MΩ                        |                |
| Operating temperature range           | -35 °C / +65 °C                                  | Safe overload (% of full scale)     | 150%                            |                |
| Creep at nominal load in 30 minutes   | 0.02%  | Ultimate overload (% of full scale) | 300%                            |                |
| Max supply voltage without damage     | 18 V   | Deflection at nominal load          | 0.4 mm                          |                |

### ELECTRICAL CONNECTIONS

|                |   |
|----------------|---|
| Cable length   | 4 m (500 - 2000 kg)<br>6 m (3000 - 5000 kg) |
| Cable diameter | 5 mm  |
| Cores          | 4/6 x 0.20 mm <sup>2</sup>                  |



The Company reserves the right to make changes to the technical data, drawings and images without notice.