

X-ray Inspection System

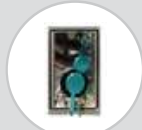
X-ray Inspection System takes advantages of the penetrating power of X-ray to detect contamination. It can achieve a full range of contaminants inspection including metallic, non-metallic contaminants (glass, ceramic, stone, bone, hard rubber, hard plastic, etc.). It can inspect metallic, non-metallic packaging and canned products, and the inspection effect will not be affected by temperature, humidity, salt content, etc.



Alarm lamp



Main power switch



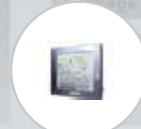
USB and Ethernet ports



Military connector



X-ray generator



HD touch screen



Industrial computer



Detector



X-ray locker



Air conditioner



Simple to Disassemble, Easy to Clean, and Reliable Security

- Good environment adaptability
- Equipped with industrial air conditioner
- Completely sealed structure to avoid dust
- Environmental humidity can reach 90%
- Environmental temperature can reach -10~40°C



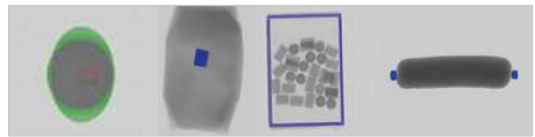
Excellent Product Applicability

- Up to eight grade image processing technology to achieve the best product adaptability and stability



Shielding Function

- Cans shielding
- Desiccant shielding
- Boundary shielding
- Sausage aluminum buckle shielding



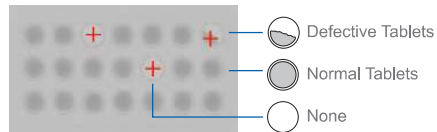
High Configuration of Hardware

- Spare parts are well-known imported brands to ensure the performance and service life of the machine



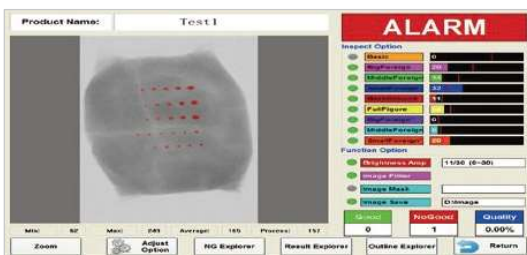
Defects Inspection Function

- The system will detect and inform tablet crack, tablet lacking, and tablet with contamination



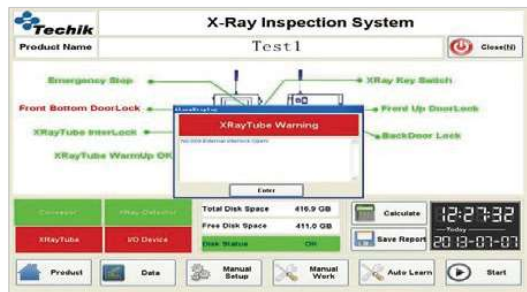
Excellent Operability

- 15-inch touch screen display, easy to operate,
- Auto-learning function. Equipment will automatically remember qualified product parameters
- Automatically save the product images, which is convenient for user's analysis and tracking



Comprehensive and Reliable Security

- X-ray leakage meets FDA and CE standards
- Perfect safe operation monitoring to prevent the leakage from mis-operation





Standard X-ray Inspection System

Model	Standard TXR Series							
Standard	2480	4080	4080L	4080S	4080SL	4080SH	5080SH	6080SH
X-ray Tube	MAX.80kV, 150W		MAX.80kV, 210W		MAX. 80kV, 350W			
Inspection Width	240mm	400mm					500mm	600mm
Inspection Height	100mm	160mm	100mm	160mm	100mm	220mm	250mm	300mm
Best Inspection Sensitivity	Stainless steel ball Φ0.3mm Stainless steel wire Φ0.2*2mm Glass/Ceramic ball Φ1.0mm					Stainless steel ball Φ0.4mm Stainless steel wire Φ0.2*2mm Glass/Ceramic ball Φ1.0mm		
Conveyor Speed	5-60m/min					10-40m/min		
O/S	Windows 7							
Protection Method	Soft curtain							
X-ray Leakage	< 1 μSv/h (CE Standard)							
IP Rate	IP66 (Under belt)							
Working Environment	Temperature: -10~40 C							
	Humidity: 30-90% no dew							
Cooling Method	Industrial air conditioning							
Rejecter Mode	Sound and light alarm, belt stops (Rejecter optional)							
Air Pressure	0.6 Mpa							
Power Supply	1.5kW							
Main Material	SUS304							
Surface Treatment	Mirror polished/Sand blasted							

Note:

The technical parameter above namely is the result of sensitivity by inspecting only the test sample on the belt. The actual sensitivity would be affected according to the products being inspected.

Compact Economical X-ray Inspection System

- Competitive price
- Good sensitivity and stability



Model		TXE-1815	TXE-2815	TXE-3815
X-ray Tube		MAX. 80W/65kV		
Inspection Width		180mm	280mm	380mm
Inspection Height		150mm		
Best Inspection Ability		Stainless steel ball $\Phi 0.5\text{mm}$ Stainless steel wire $\Phi 0.3 \times 2\text{mm}$ Glass/Ceramic ball $\Phi 1.5\text{mm}$		
Conveyor Speed		5-90m/min		
O/S		Windows 7		
Protection Method		Soft curtain		
X-ray Leakage		< 1 $\mu\text{Sv/h}$		
IP Rate		IP54 (IP65 Optional)		
Working Environment	Temperature	-10~40°C		0~40°C
	Humidity	30~90%, no dew		
Cooling Method		Industrial air conditioning		
Reject Mode		Sound and light alarm, belt stops (Rejecter optional)		
Air Pressure		0.8Mpa		
Power Supply		0.8kW		
Main Material		SUS304		
Surface Treatment		Brushed SUS		

Note:

The technical parameter above namely is the result of sensitivity by inspecting only the test sample on the belt. The actual sensitivity would be affected according to the products being inspected.

Economical X-ray Inspection System for Large Packages

It is specialized for the inspection of large size packages like big bags, cartons, boxes, etc.



Model	TXR-6080XH
X-ray Tube	MAX. 80kV, 210W
Inspection Width	650mm
Inspection Height	500mm
Best Inspection Sensitivity (Without Product)	Stainless steel ball $\Phi 0.5\text{mm}$ Glass/Ceramic ball $\Phi 1.5\text{mm}$
Conveyor Speed	10-40m/min
O/S	Windows 7
Protection Method	Soft curtain
X-ray Leakage	$< 1 \mu\text{Sv/h}$ (CE Standard)
Working Environment	Temperature:-5~40 C
	Humidity:40-60%, no dew
Cooling Method	Fan
Rejecter Mode	Sound and light alarm, belt stops (Rejecter optional)
Air Pressure	0.6Mpa
Power Supply	1.5kW
Surface Treatment	Carbon Steel

Note:

The technical parameter above namely is the result of sensitivity by inspecting only the test sample on the belt. The actual sensitivity would be affected according to the products being inspected.

Single Beam X-ray Inspection System for Bottles, Jars and Cans (Inclined Downward)



Single beam X-ray inspection system with software specifically tailored to inspect objects in all regions of cans, tins and bottles.

- Adjustable inspection range based on different dimensions of cans and bottles
- It can achieve the inspection of filling levels
- It can achieve better performance for contaminants sinking at the bottom part of the cans and bottles

Model	TXR-1630SO
X-ray Tube	MAX, 120kV, 480W
Max Detecting Width	160mm
Max Detecting Height	280mm
Best Inspection Ability	Stainless steel ball $\Phi 0.5\text{mm}$ Stainless steel wire $\Phi 0.3 \times 2\text{mm}$ Glass/Ceramic ball $\Phi 1.5\text{mm}$
Conveyor Speed	10-60m/min
O/S	Windows 7
Protection Method	Protective tunnel
X-ray Leakage	$< 0.5 \mu\text{Sv/h}$
IP Rate	IP54 (Standard), IP65 (Optional)
Working Environment	Temperature: $-10 \sim 40^\circ\text{C}$
	Humidity: 30~90%, no dew
Cooling Method	Industrial air conditioning
Rejecter Mode	Push rejecter
Air Pressure	0.8Mpa
Power Supply	3.5kW
Main Material	SUS304
Surface Treatment	Mirror polished/Sand blasted

Note:

The technical parameter above namely is the result of sensitivity by inspecting only the test sample on the belt. The actual sensitivity would be affected according to the products being inspected.

Single Beam X-ray Inspection System for Bottles, Jars and Cans (Inclined Upward)

With special design, suitable for bottles or jars in standing conditions.

- Strong X-ray power, suitable for inspection of jars, bottles, etc.
- High capacity, competitive price



Model	TXR-1630SH
X-ray Tube	MAX, 120kV, 480W
Max Detecting Width	160mm
Max Detecting Height	260mm
Best Inspection Ability	Stainless steel ball Φ0.5mm Stainless steel wire Φ0.3*2mm Glass/Ceramic ball Φ1.5mm
Conveyor Speed	10-60m/min
O/S	Windows 7
Protection Method	Protective tunnel
X-ray Leakage	< 0.5 μSv/h
IP Rate	IP54 (Standard), IP65 (optional)
Working Environment	Temperature: -10~40°C
	Humidity:30~90%, no dew
Cooling Method	Industrial air conditioning
Rejecter Mode	Push rejecter
Air Pressure	0.8Mpa
Power Supply	3.5kW
Main Material	SUS304
Surface Treatment	Mirror polished/Sand blasted

Note:

The technical parameter above namely is the result of sensitivity by inspecting only the test sample on the belt. The actual sensitivity would be affected according to the products being inspected.

Dual-beam X-ray Inspection System for Bottles, Jars and Cans



Dual-beam X-ray inspection system with software specifically tailored to inspect objects in all regions of cans, tins and bottles.

- It can achieve inspection in double visual angles and avoid missing inspection of blind area
- It can achieve better inspection ratio for irregular fragments
- Intelligent zoning to ensure optimal sensitivity for different areas

Model	TXR-2080BDX
X-ray Generator	MAX, 120kV, 480W(two for each)
Inspection Width	160mm
Inspection Height	260mm
Best Inspection Sensitivity	Stainless steel ball $\Phi 0.5\text{mm}$ Stainless steel wire $\Phi 0.3 \times 2\text{mm}$ Glass/Ceramic ball $\Phi 2.0\text{mm}$
Conveyor Speed	10-60m/min
O/S	Windows 7
Protection Method	Protective tunnel
X-ray Leakage	$< 0.5 \mu\text{Sv/h}$
IP Rate	IP54 (Standard), IP65 (optional)
Working Environment	Temperature: $-10 \sim 40^\circ\text{C}$
	Humidity: 30~90%, no dew
Cooling Method	Industrial air conditioning
Rejecter Mode	Push rejecter
Air Pressure	0.8Mpa
Power Supply	4kW
Main Material	SUS304
Surface Treatment	Mirror polished/Sand blasted

Note:

The technical parameter above namely is the result of sensitivity by inspecting only the test sample on the belt. The actual sensitivity would be affected according to the products being inspected.

Triple-beam X-ray Inspection System for Bottles, Jars and Cans

The most reliable X-ray inspection system with
“adjustable point of view” on 3 X-ray beams for any kind of jars, bottles, tins, etc.,



- Three X-ray Beams ensure high detection accuracy
- Three X-ray Beams avoid inspection blind area

Model	TXR-20250
X-ray Generator	MAX. 120kV, 480W (three for each)
Inspection Width	160mm
Inspection Height	260mm
Best Inspection Sensitivity	Stainless steel ball Φ0.4mm Stainless steel wire Φ0.2*2mm Glass/Ceramic ball Φ1.0mm
Conveyor Speed	10-60m/min
O/S	Windows 7
Protection Method	Protective tunnel
X-ray Leakage	< 0.5 μSv/h
IP Rate	IP Rate: IP54 (Standard), IP65(Optional)
Working Environment	Temperature: -10~40 ℃
	Humidity:30~90%, no dew
Cooling Method	Industrial air conditioning
Rejecter Mode	Push rejecter
Air Pressure	0.8Mpa
Power Supply	4.5kW
Main Material	SUS304
Surface Treatment	Mirror polished/Sand blasted

Note:

The technical parameter above namely is the result of sensitivity by inspecting only the test sample on the belt. The actual sensitivity would be affected according to the products being inspected.

X-ray Inspection System for Fish Bones



- TDI camera, high resolution, tiny fish bones also can be clearly shown
- External HD screen, high identification of fish bones

Model	TXR-2080F	TXR-4080F
X-ray Tube	MAX. 80kV, 350W	
Inspection Width	200mm	400mm
Inspection Height	100mm	100mm
Best Inspection Sensitivity (Without Product)	Stainless steel ball $\Phi 0.2\text{mm}$ Stainless steel wire $\Phi 0.15 \times 2\text{mm}$ (Auto Alarm) Fish bone $\Phi 0.2 \times 2\text{mm}$ (Non-automatic Alarm)	
Conveyor Speed	10-18m/min	
O/S	Windows 7	
Protection Mode	Protection tunnel	
X-ray Leakage	< 0.5 $\mu\text{Sv/h}$	
IP Rate	IP66 (Under belt)	
Working Environment	Temperature: -10~40 $^{\circ}\text{C}$	
	Humidity: 30~90%, no dew	
Cooling Method	Industrial air conditioning	
Rejecter Mode	Sound and light alarm, belt stop (Rejecter optional)	
Air Pressure	0.8Mpa	
Power Supply	1.5kW	
Main Material	SUS304	
Surface Treatment	Mirror polished/Sand blasted	

Note:

The technical parameter above namely is the result of sensitivity by inspecting only the test sample on the belt. The actual sensitivity would be affected according to the products being inspected.



X-ray Inspection System for Residual Bone Fragments

Suitable for in-line inspection of the residual bone fragments in meat processing, for instance, inspecting residual collarbones, shoulder blades in chicken.

- Compared with traditional single-energy inspection, the TXR-BDE series applies to dual-energy X-ray inspection technology, achieving higher sensitivity and inspection rate
- TXR-BDE series can identify cartilage and ignore the product effect of irregular shape

Model	TXR-4080BDE
X-ray Tube	MAX. 80kV, 210W & 350W
Inspection Width	400mm
Inspection Height	100mm
Best Inspection Sensitivity	Stainless steel ball $\Phi 0.3\text{mm}$ Stainless steel wire $\Phi 0.2 \times 2\text{mm}$ Glass/Ceramic ball $\Phi 1.0\text{mm}$
Conveyor Speed	10-40m/min
O/S	Windows 7
Protection Method	Soft curtain
X-ray Leakage	$< 1 \mu\text{Sv/h}$ (CE Standard)
IP Rate	IP66 (Under belt)
Working Environment	Temperature: $-10 \sim 40^\circ\text{C}$
	Humidity: 30~90%, no dew
Cooling Method	Industrial air conditioning
Rejecter Mode	Sound and light alarm, belt stops (Rejecter optional)
Air Pressure	0.8Mpa
Power Supply	2.0kW
Main Material	SUS304
Surface Treatment	Mirror polished/Sand blasted

Note:

The technical parameter above namely is the result of sensitivity by inspecting only the test sample on the belt. The actual sensitivity would be affected according to the products being inspected.

X-ray Inspection System for Sauce and Liquid

Easy to be integrated in existing sealed pipe system, this type of X-ray inspection system is suitable for the pump pressure fluid and semi-fluid product like sauce, liquid, etc.



Model	TXR-2480Pi
X-ray Generator	MAX, 80kV, 150W
Pipe Diameter	50mm, 63mm, 80mm
Best Inspection Sensitivity	Stainless steel ball $\Phi 0.4\text{mm}$ Stainless steel wire $\Phi 0.2 \times 2\text{mm}$ Glass/Ceramic ball $\Phi 1.5\text{mm}$
O/S	Windows 7
X-ray Leakage	$< 1 \mu\text{Sv/h}$ (CE Standard)
IP Rate	IP66 (For tunnel)
Working Environment	Temperature: $-10 \sim 40^\circ\text{C}$
	Humidity: $0 \sim 90\%$ no dew
Cooling Method	Industrial air conditioning
Air Pressure	0.8MPa
Power Supply	1.5kW
Main Material	SUS304
Surface Treatment	Mirror polished/Sand blasted

Note:

The technical parameter above namely is the result of sensitivity by inspecting only the test sample on the belt. The actual sensitivity would be affected according to the products being inspected.

X-ray Inspection System for Bulk Products

It is widely used to inspect product like nuts, grains, corns, raisins, sunflower seeds, beans, frozen fruits etc in pre-packaging detection.



Model	TXR-4080LP	TXR-4080P
X-ray Tube	MAX. 80kV, 210W	
Inspection Width	400mm	
Inspection Height	50mm(MAX)	160mm(MAX)
Best Inspection Sensitivity	Stainless steel ball Φ0.3mm Stainless steel wire Φ0.2*2mm Glass/Ceramic ball Φ1.0mm	
Conveyor Speed	60m/min	
O/S	Windows 7	
Protection Method	SUS Shield	
X-ray Leakage	< 1 μSv/h (CE Standard)	
IP Rate	IP66 (Under belt)	
Working Environment	Temperature: 0~40 C	
	Humidity:30~90% no dew	
Cooling Method	Industrial air conditioning	
Rejecter Mode	32 tunnel air jet rejecter or 4/2/1 channels flap rejecter	
Air Pressure	0.8Mpa	
Power Supply	1,5kW	
Main Material	SUS304	
Surface Treatment	Mirror polished/Sand blasted	

Note:

The technical parameter above namely is the result of sensitivity by inspecting only the test sample on the belt. The actual sensitivity would be affected according to the products being inspected.

High Configuration X-ray Inspection System for Bulk Products



- Optimized structure. With extended drive platform, the material can pass through the inspection tunnel smoothly
- Improved sensitivity. With faster CPU processing technology and big power X-ray generator, the sensitivity has been increased
- Faster speed and mass production. With Max 120m/min belt speed, the output has been greatly improved
- With high-speed air valve and 48 air jet rejecter system, the rejecter accuracy has been increased and the quantity of waste has been decreased a lot

Model	TXR-4080GP	TXR6080GP
X-ray Tube	MAX. 80kV, 350W	MAX. 80kV, 210W
Inspection Width	400mm	600mm(MAX)
Inspection Height	50mm	
Best Inspection Sensitivity	Stainless steel ball Φ0.3mm Stainless steel wire Φ0.2*2mm Glass/Ceramic ball Φ1.0mm	Stainless steel ball Φ0.6mm Stainless steel wire Φ0.4*2mm Glass/Ceramic ball Φ1.5mm
Conveyor Speed	90m/min	
O/S	Windows 7	
Protection Method	SUS Shield	
X-ray Leakage	< 1 μSv/h (CE Standard)	
IP Rate	IP66 (Under belt)	
Working Environment	Temperature: -10~40 °C	Temperature: 0~40 °C
	Humidity:30~90% no dew	
Cooling Method	Industrial air conditioning	
Rejecter Mode	48 tunnel air jet rejecter or 4/2/1 channels flap rejecter	72 tunnel air jet rejecter
Air Pressure	0.8Mpa	
Power Supply	1.5kW	
Main Material	SUS304	
Surface Treatment	Mirror polished/Sand blasted	

Note:

The technical parameter above namely is the result of sensitivity by inspecting only the test sample on the belt. The actual sensitivity would be affected according to the products being inspected.